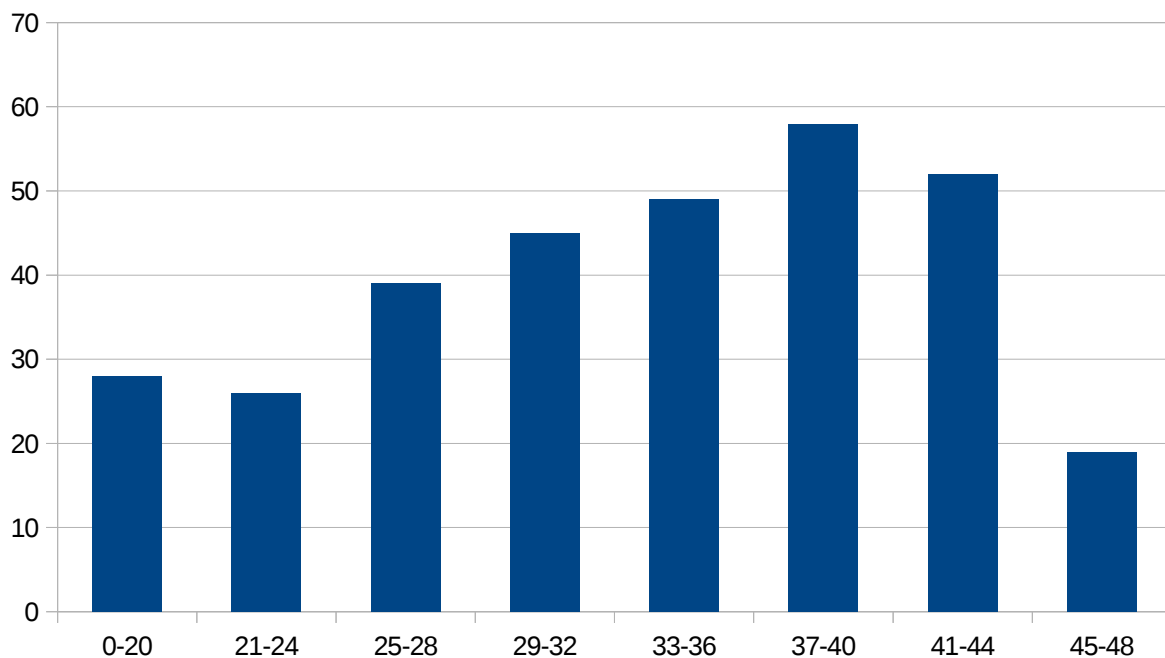


CS103 Final Exam Distribution

Here's the grade distribution for the CS103 final exam:



Because exam scores don't follow a normal distribution, we've found that the mean and standard deviation are not particularly good measures of your overall performance on the exam. Instead, we recommend looking at the exam quartiles and getting a rough sense of your performance:

75th Percentile: 40 / 48 (83%)

50th Percentile: 34 / 48 (71%)

25th Percentile: 27 / 48 (56%)

If you would like to submit a regrade request, please drop your exam off at Keith's office by the end of the first week of class in Fall 2015 with a note indicating which problems you'd like us to re-grade. We'd be happy to review how we graded the exam.